

VEGETATION MANAGEMENT

INFORMATION SHEET
COLORADO

WILDFIRE MITIGATION PROGRAM



Wildfire Mitigation Program Overview

At Xcel Energy, we're working hard every day to improve safety and reduce wildfire threats across our service area. Through our Wildfire Mitigation Program, we're consistently investing in hardening our electric infrastructure and exploring ways to improve power grid reliability and to mitigate wildfire risk. Our plan continues to evolve as we evaluate new technologies, gain more industry and stakeholder input and complete more inspections and studies to inform our program and help keep our communities safe.

Please call us at **800-895-4999** if you are having a tree near a power line pruned or removed or if you need your pole-to-house line temporarily disconnected while you trim your trees or have pruning performed. Find more online at [xcelenergy.com/Trees](https://www.xcelenergy.com/Trees).

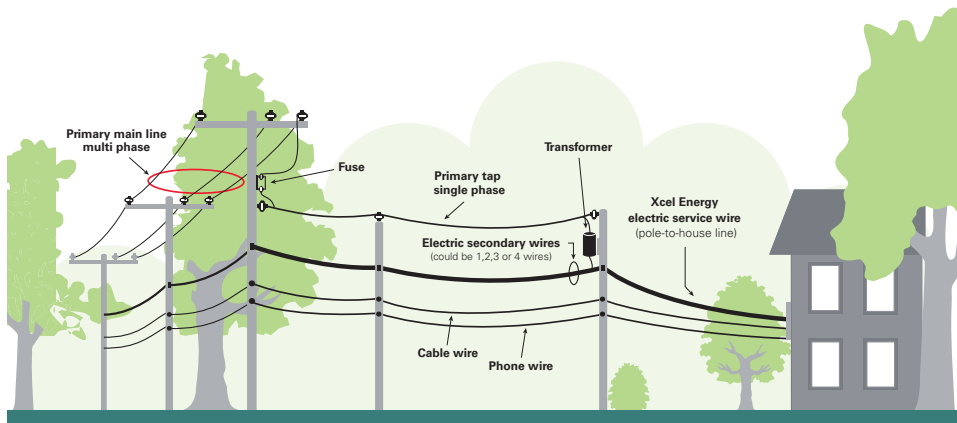
Vegetation Management

As part of the Wildfire Mitigation Program, our team conducts enhanced vegetation management work which includes trimming and clearing trees, shrubs, dense grasses and other vegetation around structures, corridors and equipment throughout identified Wildfire Risk Zones. Vegetation management helps reduce power outages and allows our crews to work safely on power lines.

Tree Pruning and Maintenance

Trees near power lines, either through growth or broken branch failure, can cause downed lines, power outages and fire ignition risk. Tree pruning is the selective removal of branches that are too close to a power line or that will grow too close to a powerline before the next maintenance cycle. Xcel Energy prunes and/or removes trees on our regular maintenance schedule – usually between every three to five years.

There is no charge for the tree work that we or our contractors perform on your property. Our goal is to provide safe, reliable electric service while also taking the best possible care of a community's valuable natural resource.



Tree Removal

Xcel Energy will contact you, or you may contact Xcel Energy, when circumstances call for tree removal on your property. Most trees evaluated for removal are dead, dying or diseased – these are known as hazard trees. Tree removal may be done using specialized equipment, bucket trucks or climbing crews. When equipment is used, smaller branches will be chipped and hauled away. Larger branches will be cut into manageable sized lengths and left on site. In inaccessible areas requiring walk-in crews, resulting debris will be managed using U.S. Forrester Service best management practices.

Pole-to-House Pruning

Pole-to-house lines have the least impact on large-scale power outages, so we only trim for clearance along these lines when major interference exists such as broken limbs on the lines. Remember, pole-to-house lines are fully energized and extremely dangerous. You may hire a qualified professional tree trimmer to perform this work in some areas.

Creating Defensible Space on Your Property

To increase your home's chance of surviving a wildfire, create defensible space on your property by removing or pruning vegetation and taking other preventative measures. Defensible space is broken into three home ignition zones. Zone 0 extends 5 feet from the furthest attached exterior point of the home, like a deck, Zone 1 extends 5 to 30 feet from the furthest exterior point of the home and Zone 2 extends 30 to 100 feet from the furthest exterior point of the home or to the edge of your property line, whichever is furthest. Here are some things you can do to create defensible space in each zone:

Zone 0 (0 to 5 feet)

- Use hardscape like gravel, pavers, concrete and other noncombustible mulch materials
- Remove all dead and dying vegetation and debris from roofs, gutters, etc.
- Replace combustible fencing, gates and arbors attached to your home with noncombustible alternatives and limit combustible items on top of decks

Zone 1 (5 to 30 feet)

- Remove all dead vegetation and dry leaves and pine needles from your yard and remove or prune flammable plants and shrubs near windows
- Trim trees regularly to keep branches a minimum of 10 feet from other trees
- Relocate wood piles to Zone 2

Zone 2 (30 to 100 feet)

- Cut or mow annual grass down to a maximum height of 4 inches
- Wood piles must have a minimum of 10 feet of clearance, down to bare soil, in all directions
- Create horizontal space between shrubs and trees and create vertical space between grass, shrubs and trees

For more wildfire safety and preparedness tips, visit

[XcelEnergyWildfireMitigation.com/Safety-and-Preparedness](https://www.xcelenergy.com/safety-and-preparedness).

Contact Us

833-352-0087

[XcelEnergyWildfireMitigation.com](https://www.XcelEnergyWildfireMitigation.com)

Info@XcelEnergyWildfireMitigation.com

